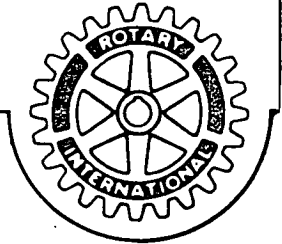


BLASTOFF

News Bulletin for the
Space Center Rotary Club

Meets every Monday at noon
Holiday Inn, Nassau Bay

DISTRICT 589



Rotary International President, Edward F. Cadman
District 589 Governor, Ray H. Potter
Club President, Bob Wren
Editor, Tom Wier

"You are the key"

¹⁶
DECEMBER 9, 1985

PROGRAMS

Don Kirk, Chairman

- DEC 16 **Dr. Max Faget**, President and CEO, Space Industries, Inc. A first hand account of the first habitable space platform project.
- DEC 23 **Wine and cheese "party-meeting"**
- DEC 30 **Floyd Boze**, "Proposed Enactments and Resolutions of Rotary International". Wine and cheese party format with seating.
- JAN 6 **Kate Thomas**, Business Editor, Houston Post

PROGRAM NOTES

by John Francis

MEETING OF DEC. 2: Joel Terry, the Regional director of the Texas Employment Commission, addressed this weekly meeting of the Space Center Rotary. His presentation covered the functions and benefits of the TEC. Mr. Terry first explained the labor exchange function of his agency, a positive function of bringing together the employer and qualified employee for their mutual benefit, which includes 60,000 placements over the course of a normal year. This is a very significant reduction of the unemployment rolls and the subsequent benefits that would have been paid out. ---TEC offices also conduct aptitude testing and on-site recruitment services for new businesses using a new form of occupational aptitude testing that can actually predict, with 70% reliability, whether the prospective employee will be successful at learning and performing the job.---- TEC cooperates with employers by both accepting referrals from employers and making referrals to employers according to a reverse referral agreement. Mr. Terry urged all employers to become involved in the process by which employees are hired and released and stressed good record keeping of an employee's performance. Otherwise, he said, the employer may forfeit his right to representation in TEC's deliberations. This could ultimately be very expensive to the employer if his rates are raised or he has to pay large chargebacks on claims that are not really his responsibility but that he is unable to refute. A wide ranging question and answer period allowed Rotarians a chance to get specific answers to their queries. (Cont'd with photos on page 4)

REVERSE DRAW

PARTY A-COMING

Hot news by long distance from Reverse Draw Party Chairman **Frank Morgan**:

Main Prize for the Jan. 31, 1986 party will be **\$10,000 CASH!** -----

Plus there will be other prizes totalling **about \$10,000 more** drawn for at scattered times during this exciting evening. The party will be at the Hobby Hilton and will include cocktails and dinner. There will be 400 tickets sold at \$100 each and there will be no door tickets!

Frank said over the phone that he hoped the tickets would be available for sales to start **today !!**

NEW MEMBERS

David Lee Albritton, sponsored by **Jim McFeron**, was one of two new members inducted in the club on December 2. David's classification is "Consultant/Computer Systems". He is president of Albritton, Inc., P. O. Box 591429, Houston 77259, phone 480-2224. David is a University of Houston product and a native of Houston. David and wife Kathy live at 403 Woodrail Webster 77598, phone 486-9307. They have four children, Laurie, John, Daniel, and Nicholas.

Jerry Jones, the other new member inducted December 2, has the full name of George Jerome Jones, Jr. Jerry was sponsored by **David Ross** and has been assigned the classification "Real Estate/ Public Relations". His position is P/R Coordinator/Land Development in the Commercial Marketing portion of South Shore Harbour Development, Ltd., 3027 FM 2094, League City 77573, phone 334-7501. Jerry is a native of Austin and attended both UT Austin and UH CLC. ----- **Club members, please welcome both David and Jerry!**



CLUB ELECTIONS

--**AGO TODAY!**

Elections for the 86/87 club year beginning July 1, 1986 occur today.

----- President-elect **Jim Hargrove** automatically becomes the new president. All other positions are not automatic. The nominating committee has made the following recommendations:

President-Elect:

Jim McNatt

Secretary:

Billy Weseman

Treasurer:

John Watson

Sergeant-at-Arms:

Charles Hardwick

Directors:

(Vote for 3. The 3 with the highest number of votes become directors)

John Francis

Clay Fulcher

Terry Hesson

Jim Kennedy

Dave King

Jack Lister

Bill Rittenhouse

Terry Stock

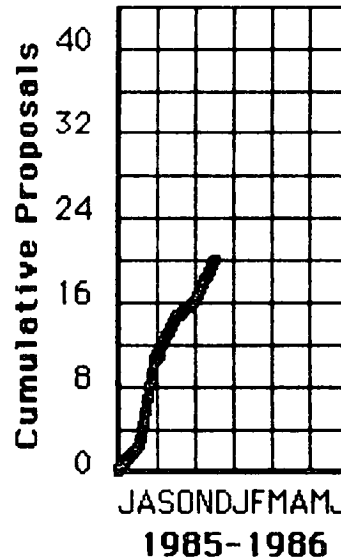
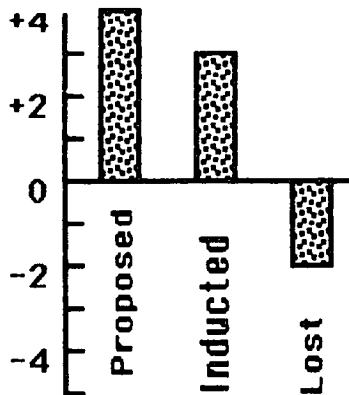
Steve Waldner

Nominations from the floor will be accepted provided the person nominated has agreed advance to serve if elected.

ROTARY INTERNATIONAL: Looking toward member no. 1,000,000.

Now at an estimated 993,000 the "countdown" has started and is expected to reach one million during the week of Rotary's founding, Feb. 23, 1986. Since it is impossible to pinpoint *the* millionth member, the plan of RI President Cadman is to select one at random from all those inducted throughout the world during the week of Feb. 17-23, 1986. All those inducted during that week become members of Rotary's "Million Member Club" but the one selected will be the center of much publicity.

Dr. Ron Hopping's
20/20 Hindsight
Chart for November



The Membership Development Committee at work---
Ralph Schimmel, Director; Terry Stock, Chairman

THANKS TO CHENG HOOI----

Cheng took the initiative to take pictures of the recent pancake breakfast and brought them to your editor, who was not able to attend the event. Now we have them for our permanent activity record. One kitchen scene is shown below--in case you also missed the event to honor Shrimporee Auction donors. Thanks, Cheng! We need more such help.



ROTARY WIVES

Dorothy Kennedy reports that Christmas singing was part of the good times had by Rotary wives attending the Dec. 10 luncheon at South Shore Harbour. ---TAKE THE BLASTOFF HOME, let your wife in on this opportunity for friendships. The informal group of the wives of Space Center Rotarians meets the second Tuesday of each month. You do not have to be elected, so "elect" yourself. It is a friendly bunch! The next meeting is January 14 at Golfcrest Country Club. Anne Weseman will have details. Her office number is 488-2244.

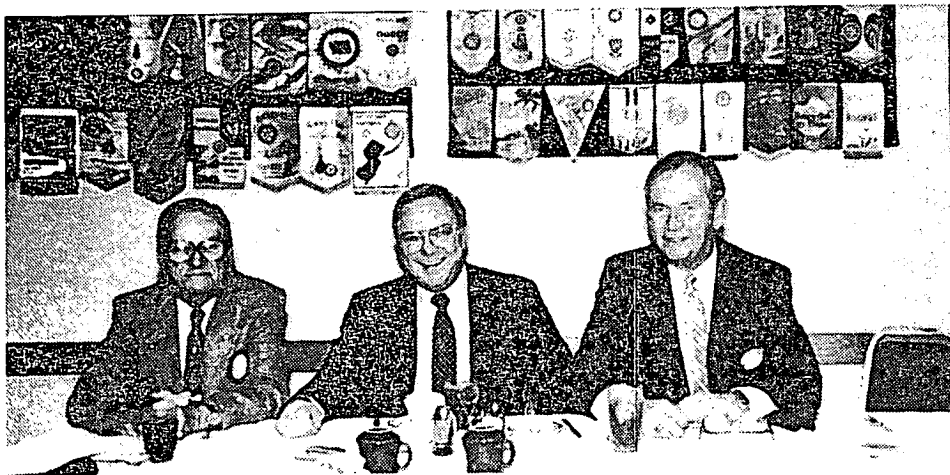
**Merry Christmas and
Happy New Year !!!!!**



Bob Schlacks recently donated a 3 ft by 5 ft Texas Sesquicentennial flag to the club. Sgt.-at-Arms Billy Weseman is working on displaying it.

(Cont'd from page 1)

MEETING OF DEC 9: Channel 2 News anchorman Ron Stone was once again our guest speaker. This time he provided us with a marvelous encapsulation of what the Texas Sesquicentennial is all about. In just a few minutes, he was able to personalize the Texas Republic's heroes. He enabled us to understand how these men came together for a brief moment of crisis and laid the foundation for a unique American legacy, the Texan. His presentation, though spiced with anecdotes, contained serious commentary on the character of these great men. For his effort he received a standing ovation.



PHOTOS AT LEFT: Joel Terry, TEC Distr. Dir. and Fred Joy, who introduced him on 12/2. Lower photo: Gene Lindquist, TV personality Ron Stone, 12/9 speaker, and Don Kirk, who introduced Stone. Gene, we certainly thank you for making the arrangements to get this interesting but busy speaker.

HAPPY BIRTHDAY

DICK CHANDLER	12/16
ROY ILES	12/17
CHENG HOOI	12/18
JOHN WATSON	1/2
JACK LISTER	1/2
MERY HUGHES	1/4
BOB LING	1/4
LAMAR BOWLES	1/5

BLASTOFF READERS PLEASE NOTE:

Because of the holiday period and the special program modifications for the 12/23 and 12/30 meetings, the next Blastoff will be issued on January 6, 1986.-----

SPACE CENTER ROTARY



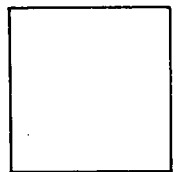
P.O. Box 58862
Houston, TX 77258

Officers

President	Bob Wren
President Elect	Jim Hargrove
Secretary	Jim McNatt
Treasurer	Sam Calanni
Sergeant-at-Arms	Billy Weseman
Past President	Charles Hartman
Ex-Officio, PDG	Floyd Boze

Directors

Terry Hesson	Jim Kennedy
John Watson	Charles Hardwick
Don Robison	Billy Smith
Lamar Bowles	Ralph Schimmel
Joe Shirley	



FIRST CLASS